

Meghan Pump Station Project - RFCSP

Kyle Harvey, P.E.

Project Engineer, SAWS

Florinda Gonzales on behalf of Stella Manzello

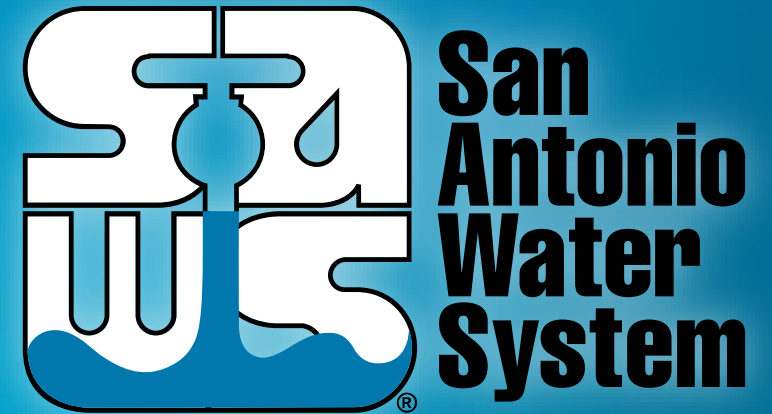
Contract Administrator, SAWS

Marisol V. Robles

SMWVB Program Manager, SAWS

Steve Brown, P.E.

Project Engineer of Record



Non-Mandatory Pre-Submittal Meeting

December 22, 2020

MAKING SAN ANTONIO
WATERFUL



Oral Statements

Oral statements or discussion during the pre-submittal meeting will not be binding, nor will it change or affect the terms or conditions within the Plans and Specifications for this Project. Changes, if any, will be addressed only via an Addendum.

Meeting Agenda

- General Information
- SMWVB Requirements
- Contract Solicitations Website
- Vendor Registration
- Contract Requirements
- Required Experience
- Evaluation Process
- Evaluation Criteria
- Proposal Packet Preparation
- Key Dates
- Communication Reminders
- Proposal Due Date
- Project Overview
- Contact Information

General Information

- This is a Non-Mandatory pre-submittal meeting
- This presentation will be posted to the SAWS website
- The construction duration is 300 calendar days
- The Construction estimate \$5,178,000.00
- Procured under Chapter 2269 of Texas Government Code as a Request for Competitive Sealed Proposals (RFCSP)

Aspirational SMWB Goal

Industry	Aspirational SMWB Goal
Construction	*20%

*Expressed as 20% of the total submittal price.

Accepted SMWVB Certification Agency

- **South Central Texas Regional Certification Agency**

(Includes the Texas Historically Underutilized Business “HUB” Program. MBEs, WBEs, SBEs, HUBs.)

Minimum Qualifications for SMWVB recognition:

- SBE-Certified (even MBEs and WBEs)
- **Local office or local equipment yard**

Good Faith Effort Plan (GFEP) FAQs

- **Q: Is the 20% SMWB goal mandatory?**

A: No, but we ask prime consultants to do their best with good faith outreach efforts. If the goal is not met, proof of outreach efforts is required with the submittal.

- **Q: What if I am having trouble finding SMWB subconsultants?**

A: Please email the SMWVB Program Manager with the scopes of work you are seeking. You will receive lists of local SMWVB-certified firms to contact.

- **Q: What if my business is SMWB-certified? Do I need to find SMWB subs?**

A: If your firm is SMWVB-certified, you will most likely meet the goal. However, the GFEP is a required document, and a good faith outreach effort is still necessary.

- **Q: What if I have questions about the GFEP?**

A: Please contact the SMWVB Program Specialist at 210-233-3420, or at Marisol.Robles@saws.org. GFEP questions can be asked at any time before the submittal is due.

Scoring - SIR-11 (Maximum 10 SMWB Points)

A. M/WBE Scoring Method: Up to 10 Points (By percentage). 20.00% M/WBE Goal:
• MBE Participation Percentage between 1% and 4.99%: 1 Point
• MBE Participation Percentage between 5% and 9.99%: 2 Points
• MBE Participation Percentage between 10% and 14.99%: 4 Points
• MBE Participation Percentage between 15% and 16.99%: 5 Points
• MBE Participation Percentage between 17% and 19.99%: 8 Points
• MBE Participation Percentage meeting or exceeding 20.00%: 10 Points
B. SBE (Non-M/WBE) Scoring Method (for participation of firms whose sole certification is "SBE"): Up to 5 Points (By percentage). 5% SBE Participation:
• SBE Participation Percentage between 1% and 1.99%: 1 Point
• SBE Participation Percentage between 2% and 2.99%: 2 Points
• SBE Participation Percentage between 3% and 3.99%: 3 Points
• SBE Participation Percentage between 4% and 4.99%: 4 Points
• SBE Participation Percentage meeting or exceeding 5.00%: 5 Points

Scoring - SIR-11 (Maximum 10 SMWB Points)

C. Optional: Prior subcontractors/supplier utilization compliance averages for the past 2 years may be considered when totaling the SMWB score, based upon data from the Subcontractor Payment & Utilization Reporting (SPUR) System. This applies to SMWB and Non-SMWB Prime Contractors' utilization of their SMWB subcontractors/suppliers. Up to 3 points may be deducted from the SMWB score for discrepancies between the pledged SMWB goal, and the current/ongoing actual utilization of SMWB subcontractors/suppliers on recent SAWS projects. This option does not apply to work order/unspecified contracts.

- Total SMWB Subconsultant compliance discrepancy between 3% - 4%:

Deduct 1 Point

- Total SMWB Subconsultant compliance discrepancy between 4% - 5%:

Deduct 2 Points

- Total SMWB Subconsultant compliance discrepancy greater than 5%:

Deduct 3 Points

Post Award: Subcontractor Payment & Utilization Reporting (S.P.U.R.) System & Subcontractor Changes

<https://saws.smwbe.com>



SMWVB Questions

Questions related to SMWVB may be directed to SAWS' SMWVB Program Manager until bids are due. Her contact information is as follows:

Marisol V. Robles

Contract Administration Department

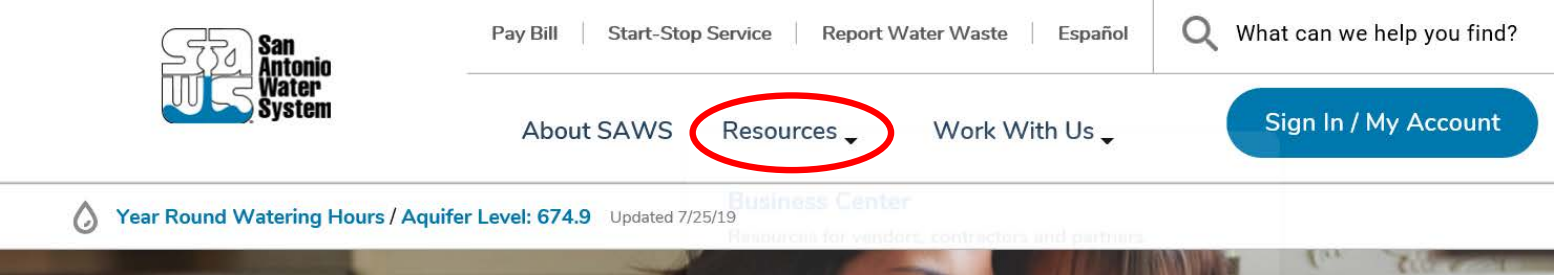
San Antonio Water System

Email Address: Marisol.Robles@saws.org

Telephone No.: (210) 233-3420

Contract Solicitations Website – Recent Changes

- To locate the Contract Solicitations website choose Resources




- At the drop down menu choose Contract Solicitations



Contract Solicitations Website – Recent Changes

- Choose the specific project
- The following buttons are now located under the advertisement:
 - Notify Me
 - Plan Holder’s List
 - Downloads
 - Plans
 - Specs
 - Addendums
 - Geotechnical Data Report






**Non-Mandatory
Pre-Bid Meeting**

10:00 AM, Tuesday Aug. 6, 2019


San Antonio Water System Customer Service
Building, 2800 U.S. Hwy 281 N, San Antonio,
Texas 78212; Conference Room CR-C145



Notify Me

Receive updates sent straight to your inbox.

[Subscribe](#)




Plan Holders List

View plan holders list.


[View List](#)

Downloads

Specifications 

Jul. 31, 2019

Note: You must be logged in to access this document.

Plans 

Jul. 31, 2019

Note: You must be logged in to access this document.

Vendor Registration & Notification (VRN)

- Please register through SAWS Vendor Registration Program on the SAWS website at www.saws.org to ensure access to the latest information
- To receive updates on specific projects, registered vendors must 'Subscribe' to the project by selecting the project, and clicking 'Subscribe' under the Notify Me box

https://apps.saws.org/Business_Center/Contractsol/



Notify Me

Receive updates sent straight to your inbox.



Subscribe

Contract Requirements

- Prevailing Wage Rate and Labor Standards – Section 2.10 of the General Conditions
 - Certified payroll to be submitted on weekly basis
 - Wage decisions are included within the specifications
 - Contractors to utilize LCP Tracker
 - Site visits are random and unannounced
 - Interviews will be conducted and will be private & confidential
 - Payroll records are subject to review
 - All apprenticeship programs will need to be approved by Department of Labor prior to starting
 - Contractors are responsible for sub-contractor payroll
 - Late payrolls delay contractor payments from SAWS

Contract Requirements

- Insurance requirements are found in Section 5.7 of the GCs
 - Pollution Liability & Builders Risk is required
 - Maintain insurance coverage during the construction of this Project
- Insurance must be compliant prior to executing the contract
- SAWWS will ask for insurance prior to Board award to expedite execution of the contract
 - Any deficiencies must be corrected prior to Board award

Required Experience

- Respondents should have the following experience to submit a proposal:
 - demonstrate, completely and sufficiently, that wet utility installation, including pump and/or tank sites are a primary business focus and service, and such services have been successfully provided for at least five (5) continuous years.

Evaluation Process

- Technical Evaluation Committee (TEC) will score the proposals based on the evaluation criteria published in the Supplementary Instructions to Respondents to determine the Respondent who can provide the best value to SAWS
- Price will be calculated (lowest price receives the highest points) and added to final scores
- SMWB will be added to final scores
- Selection Evaluation Committee reviews final scores
- Negotiations, if any
- Board award

Evaluation Criteria

Criteria	Weight
Team Qualifications and Experience	20 pts
Quality, Reputation, and Ability to Deliver Projects on Schedule and within Budget	20 pts
Project Approach	15 pts
Price	35 pts
Small, Minority, and Woman-Owned Business (SWMB) Participation	10 pts
TOTAL	100 pts

Evaluation Criteria

Provide all information requested from the Supplementary Instructions to Respondents

- Team Qualifications and Experience
 - Organization Structure and Information on Prime Contractor
 - Proposed Team Structure and Key Personnel Roles and Responsibilities
 - Qualifications and Experience of Key Personnel Proposed for this project
- Quality, Reputation, and Ability to Deliver Projects on Schedule and within Budget
 - Prime Contractor 5 Similar Projects demonstrating On-time completion in the past ten (10) years
 - 2 projects demonstrating Subcontractor(s) Performance on Similar Projects in the past five (5) years

Evaluation Criteria

Provide all information requested from the Supplementary Instructions to Respondents

- **Project Approach, Schedule, and Availability**
 - Project Approach
 - Project Schedule and Unforeseen Conditions
 - Availability of Key Personnel and Equipment
 - Safety Information for Prime Contractor and Subcontractor(s)

Proposal Packet Preparation

- Review Instructions to Respondents and Supplementary Instructions to Respondents
- Utilize the Proposal Response Checklist
 - 3 files required for electronic submittal
 - Follow file naming convention
- Thoroughly review scope and ensure project examples and key personnel resumes clearly show similar experience
 - Proposal should demonstrate a clear picture of Project Team experience and capabilities (Org chart, projects, and resumes for Key Personnel and Key Subcontractors) performing a similar scope of work as in this RFCSP

Proposal Packet Preparation *(cont.)*

- Thoroughly review evaluation criteria and respond with all required information to maximize points
- Using the Evaluation Criteria form
- Avoid “boilerplate” responses
- Double check all mathematical calculations and verify all extensions
- Addendums are acknowledged on the Price Proposal
- Ensure Mobilization Line Item does not exceed the percentage allowed
- References and contact information must be valid
 - Confirm phone numbers and email addresses
 - Project references are the project owners, not consultants, or other contractors
- Ensure required documents are submitted and signed (i.e. Respondent Questionnaire, CIQ, etc.)

Key Dates

- January 4, 2021 by 2:00 PM Questions Due
- January 7, 2021 by 2:00 PM Addendum Posted to SAWS Website
- January 13, 2021 by 2:00 PM Sealed Proposals Due
- January 2021 Sealed Proposals Evaluation
- February 2021 Selected Respondent Notified
- March 2, 2021 SAWS Board Approval and Award

Communication Reminders

- There should not be any communication with the following during the Proposal period:
 - ✓ Design Engineer
 - ✓ SAWS Project Manager or Project Engineer
 - ✓ Any other SAWS staff
 - ✓ City Council member or staff
 - ✓ SAWS Board of Trustees
- This includes phone calls, emails, letters, or any direct or indirect discussion of the Proposal.

Key Dates - Submission Due Date

- Proposals due no later than 2:00 PM CDT January 13, 2021
- Electronic Proposals Only
- Follow specific electronic proposal delivery instructions:
 - Request the FTP Site for Upload no later than January 12, 2021 at 2:00 PM
 - Follow naming convention provided in the Respondent Proposal Checklist for all 3 files
 - Late responses will not be accepted and will not be opened
 - A WebEx proposal opening meeting will be held January 13, 2021 at 2:00 PM

Questions

- Should be submitted no later than January 4, 2021 at 2:00 PM CDT
- Must be submitted in writing:

Stella Manzello

Contract Administrator

Contract Administration Department

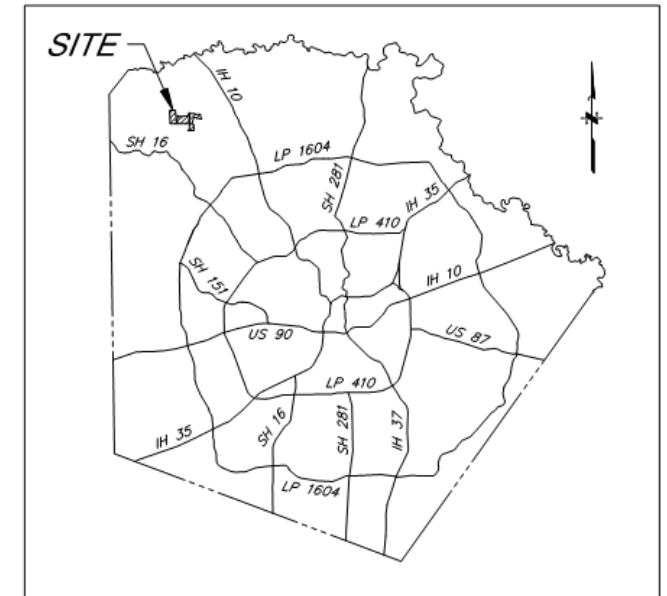
San Antonio Water System

stella.manzello@saws.org

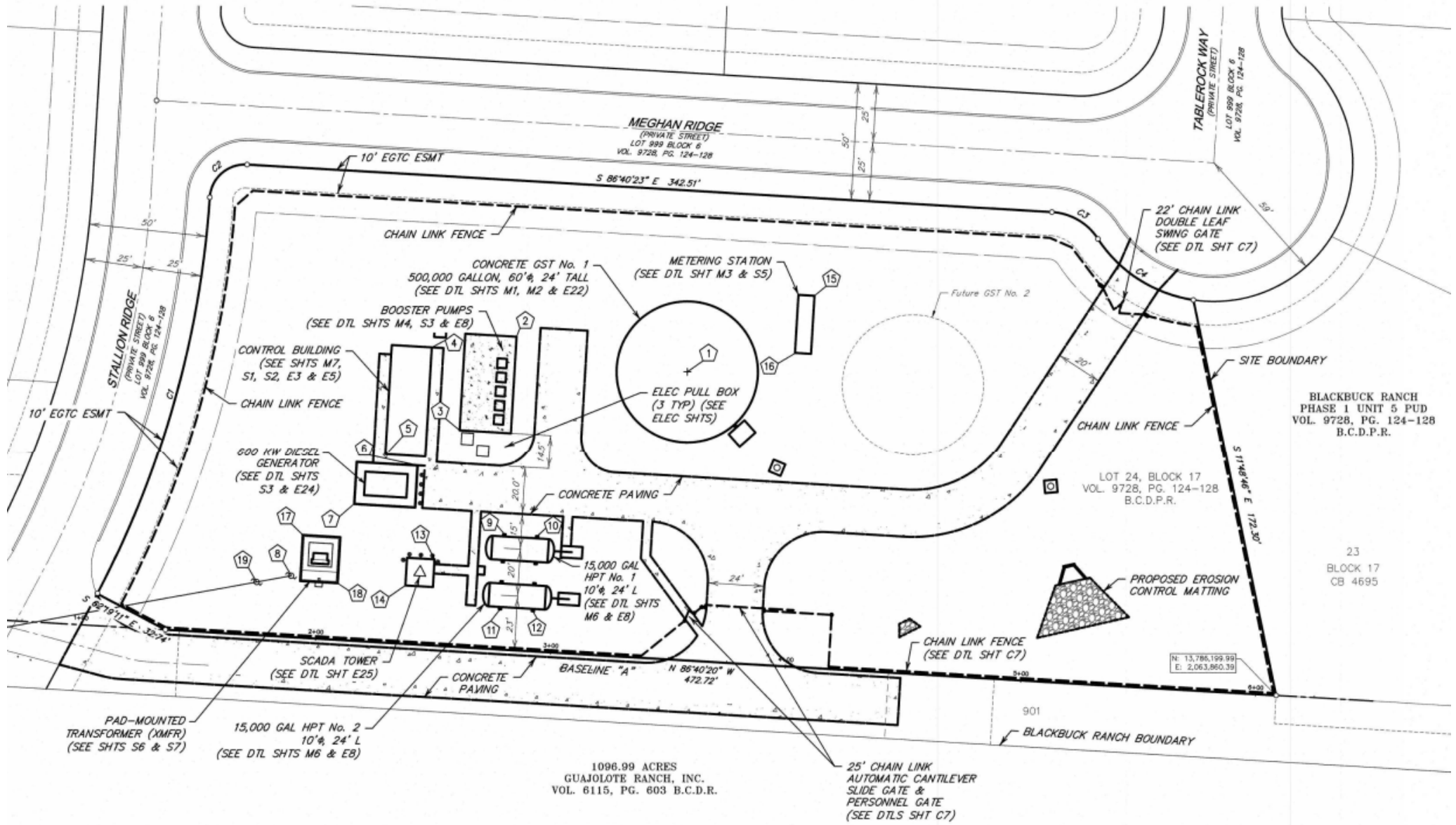
Fax: (210) 233-4290

Project Overview

- 2 acre site located in the Canyons at Scenic Loop Subdivision off Scenic Loop Road south of Boerne Stage Road.
- Pump Station generally consists of the following:
 - 500,000 gallon concrete ground storage tank
 - (3) 1,050 gpm vertical turbine pumps
 - (2) 300 gpm jockey pumps
 - (2) 15,000 gallon hydropneumatic pressure vessels
 - Diesel generator
 - Electrical & Control building
 - SCADA tower
 - Yard piping
 - Paving, grading, drainage, and related site work
 - Fencing and security



BEXAR COUNTY AREA MAP



Meghan Pump Station Project



Meghan Pump Station Project - RFCSP

Kyle Harvey, P.E.

Project Engineer, SAWS

Florinda Gonzales on behalf of Stella Manzello

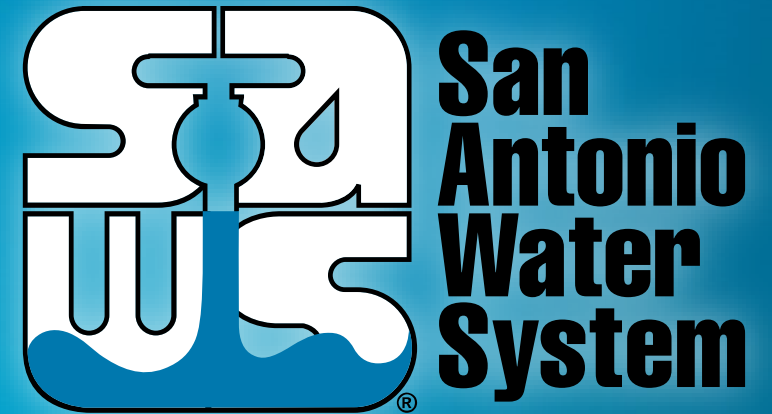
Contract Administrator, SAWS

Marisol V. Robles

SMWVB Program Manager, SAWS

Steve Brown, P.E.

Project Engineer of Record



Non-Mandatory Pre-Submittal Meeting

December 22, 2020

MAKING SAN ANTONIO
WATERFUL

